

HT Series

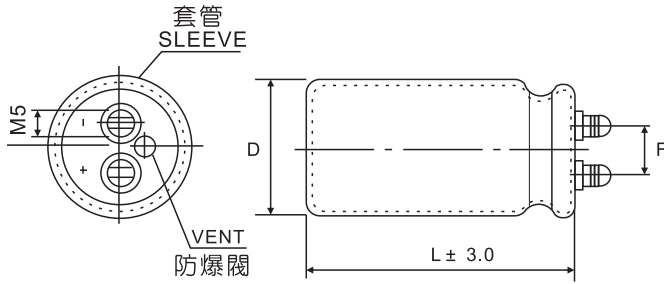
- Endurance with ripple current: 105°C 2000 hours (紋波疊加)
- Ideally suited for use in computers, communication powers and inverters
- ROHS Compliance



● SPECIFICATIONS

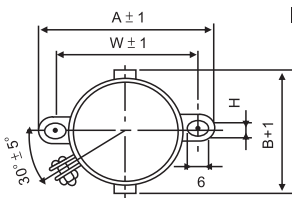
Items	Characteristics										
Category	- 40 to +105°C										
Temperature Range											
Rated Voltage Range	10 to 100 Vdc					160 to 450 Vdc					
Capacitance Tolerance	± 20% (M)										(at 20°C ,120Hz)
Leakage Current	I=0.01CV, or 5mA max whichever is greater. (at 20°C after 5 minutes) Where, I :Max. Leakage current (μA). C : Nominal capacitance (μF) .V :Rated voltage(V)										
Dissipation Factor (tan δ) (at 20°C ,120Hz)	ϕ / R.V	10	16	25	35	50	63	80	100	165~250	350~450
	35	0.75	0.6	0.4	0.3	0.25	0.2	0.2	0.15	0.15	0.2
	50	0.85	0.65	0.45	0.3	0.3	0.3	0.25	0.2	0.15	0.2
	65	1.0	0.7	0.5	0.5	0.3	0.3	0.25	0.2	0.15	0.2
	76	1.3	0.8	0.7	0.6	0.5	0.3	0.25	0.25	0.2	0.25
	80	1.5	1.0	0.8	0.7	0.6	0.4	0.3	0.25	0.2	0.25
	90	1.5	1.0	0.8	0.7	0.6	0.4	0.3	0.25	0.2	0.25
Low Temperature Characteristics	10~100 V			Z-40°C / Z +20°C				≤ 12			
	160~450 V			Z-25°C / Z +20°C				≤ 8			
Load. Life	The following specifications shall be satisfied when the capacitors are restored to 20°C after the voltage is applied for 2000 hours at 105°C										
	Capacitance change	≤ ±20% of the initial value									
	DF (tan δ)	≤ 200 % of the initial specified value									
	Leakage current	≤ The initial specified value									
Shelf Life	The following specifications shall be satisfied when the capacitors are restored to 20°C after exposing them for 1000 hours at 105°C without voltage applied at rated temperature.										
	Capacitance change	≤ ±20% of the initial value									
	DF (tan δ)	≤ 200 % of the initial specified value									
	Leakage current	≤ The initial specified value									
Ripple Current & Frequency Multiplier	Freq(Hz) / R.V.(V)	50	60	120	300	1K	10K up				
	10~100	0.65	0.74	1.00	1.09	1.16	1.22				
	160~250	0.81	0.87	1.00	1.07	1.13	1.21				
	315~400	0.85	0.90	1.00	1.05	1.11	1.20				
Ripple Current & Temperature Multiplier	Temperature (°C)			40	55	70	85	105			
	Multiplier	≤ 200V		4.9	3.9	3.0	1.8	1.0			
		≥ 350V		3.8	3.3	2.5	2.0	1.0			

- Chip Type SMD
- Miniature Type
- General Purpose
- High Frequency Low Impedance
- High Voltage High Reliability
- Non-polar Type
- Large Size Snap-in
- Large Size Screw
- X Metallized Polypropylene Film Capacitors

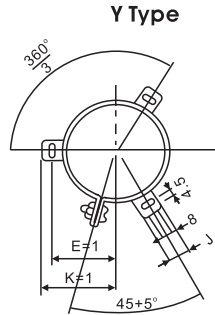


TYPE TG

Mounting clamp 卡箍



I Type



Y Type

D ± 1.5	F ± 1
35	14
42	15
50	22
65/63.5	28
76	32
80	32
90	32

D	A	B	W	H
35	62	44	50	3.2
42	64	50	54	3.5
50	80	64	68	4.5
63(63.5)	93	76	81	4.5

D	E	K
50	32.5	37.0
65(63.5)	38.0	43.5
76	44.5	50.5
80	46.5	53.0

• DIMENSIONS

UF	V.DC Item	10V		16		25		35		50		63		80		
		φ DxL	Ripple Current	φ DxL	Ripple Current	φ DxL	Ripple Current	φ DxL	Ripple Current	φ DxL	Ripple Current	φ DxL	Ripple Current	φ DxL	Ripple Current	
2200														35*50	2.4	
2700													35*50	2.3	35*50	2.7
3300													35*50	2.5	35*50	3.0
3900											35*50	2.8	35*50	2.8	35*60	3.4
4700											35*50	3.1	35*50	3.1	35*60	3.7
5600											35*50	3.3	35*60	3.5	35*80	4.5
6800											35*50	3.3	35*60	3.9	35*80	4.9
8200									35*50	3.3	35*60	3.8	35*80	4.7	42*80	5.1
10000									35*50	3.6	35*80	4.6	35*80	4.7	42*100	6.1
12000						35*50	3.7	35*60	4.2	35*80	5.1	42*80	5.5	42*100	6.7	
15000						35*50	4.1	35*60	4.7	35*80	5.7	42*100	6.6	50*100	8.3	
18000				35*50	4.2	35*60	4.8	35*80	5.7	42*80	6.7	42*100	7.4	50*120	9.9	
22000				35*50	4.7	35*60	5.3	35*80	6.3	42*100	8.1	50*100	9.0	50*120	11.0	
27000		35*50	4.9	35*60	5.2	35*80	6.4	42*80	7.5	42*100	9.1	50*120	10.9	65*100	11.4	
33000		35*50	5.1	35*60	5.7	35*80	6.7	42*100	9.0	50*100	11.1	50*120	12.0	76*100	13.9	
39000		35*60	5.9	35*80	6.8	42*80	7.8	42*100	9.2	50*120	13.1	65*100	12.5	76*100	13.9	
47000		35*80	7.1	35*80	7.1	42*100	9.3	50*100	11.2	50*120	13.9	65*120	14.9	76*120	16.5	
56000		35*80	7.1	42*80	8.4	42*100	9.7	50*100	11.4	65*100	13.9	76*120	16.3	76*120	18.1	
68000		42*80	8.5	42*80	8.8	50*100	11.2	50*120	13.6	65*120	16.6	76*120	18.4			
82000		42*80	8.9	42*100	10.7	50*100	11.2	65*100	14.8	76*120	18.9	76*140	20.0			
100000		42*100	10.7	42*100	10.8	50*120	14.8	65*120	17.6	76*120	19.5					
120000		42*100	11.0	50*100	13.1	65*100	14.9	65*120	17.6	76*120	19.5					
150000		50*100	13.2	50*120	15.3	65*120	17.9	76*120	19.8							
180000		50*120	15.7	50*120	15.7	65*120	17.9	76*120	19.8							
220000		50*120	16.8	65*120	19.2	76*120	21.3									
270000		65*120	19.6	65*120	19.6	76*120	21.7									
330000		65*120	19.7	76*120	21.1											
390000		76*120	21.3	76*120	21.3											
470000		76*120	21.4	76*140	24.2											

Ripple Current: A/rms at 120Hz , 105°C Dimension: φ DxL(mm)



V.DC Item	100		160		200		250		315		350		400	
	ϕ DxL	Ripple Current	ϕ DxL	Ripple Current	ϕ DxL	Ripple Current	ϕ DxL	Ripple Current	ϕ DxL	Ripple Current	ϕ DxL	Ripple Current	ϕ DxL	Ripple Current
180									35*50	0.8	35*50	0.8	35*50	0.8
220									35*50	0.9	35*50	0.9	35*50	0.9
270							35*50	0.8	35*50	1.0	35*50	1.0	35*50	1.0
330					35*50	0.9	35*50	0.9	35*50	1.1	35*50	1.1	35*60	1.2
390					35*50	1.0	35*50	1.0	35*50	1.2	35*60	1.3	35*60	1.3
470					35*50	1.1	35*50	1.1	35*60	1.4	35*60	1.4	35*80	1.4
560			35*50	1.2	35*50	1.2	35*50	1.2	35*60	1.5	35*80	1.6	35*80	1.4
680			35*50	1.3	35*50	1.3	35*60	1.4	35*80	1.7	35*80	1.6	42*80	1.7
820			35*50	1.4	35*50	1.4	35*80	1.6	35*80	1.7	42*80	1.8	42*100	2.0
1000			35*50	1.6	35*60	1.7	35*80	1.6	42*80	2.0	42*100	2.2	42*100	2.2
1200			35*60	1.9	35*60	1.9	35*80	1.8	42*100	2.4	42*100	2.4	50*100	2.7
1500			35*60	2.1	35*80	2.3	42*80	2.1	42*100	2.7	50*100	3.0	50*100	3.3
1800	35*50	2.7	35*80	2.5	35*80	2.5	42*100	2.5	50*100	3.3	50*120	3.6	65*100	3.8
2200	35*50	3.0	35*80	2.8	42*80	3.0	42*100	2.9	50*120	4.0	50*120	4.0	65*100	4.2
2700	35*60	3.5	42*80	3.3	42*100	3.6	50*100	3.5	50*120	4.4	65*100	4.6	65*120	5.0
3300	35*80	4.2	42*100	3.8	42*100	4.1	50*120	4.2	65*100	5.1	65*120	5.5	76*120	5.5
3900	35*80	4.2	42*100	3.8	50*100	4.9	50*120	4.6	65*120	6.0	76*120	6.7	76*140	7.1
4700	42*80	5.0	50*100	4.6	65*100	5.3	65*120	5.7	76*100	6.8	76*120	7.8	76*140	7.6
5600	42*80	5.4	50*100	5.1	65*100	5.8	65*120	6.3	76*120	8.0	76*140	8.3		
6800	42*100	5.8	50*120	6.1	65*120	6.9	76*120	7.7	76*140	9.2				
8200	42*100	6.4	65*100	7.0	65*120	7.6	76*120	8.4						
10000	50*100	7.8	65*120	8.4	76*120	9.3								
12000	50*120	9.3	76*100	9.4	76*120	10.2								
15000	50*120	10.4	76*120	11.4										
18000	65*100	10.4	76*140	13.4										
22000	65*120	12.5												
27000	76*120	13.7												
33000	76*120	15.2												
39000	76*140	16.1												

Ripple Current:A/rms at 120Hz , 105°C Dimension: ϕ DxL(mm)

Chip Type SMD
Miniature Type
General Purpose
High Frequency Low Impedance
High Voltage High Reliability
Non-polar Type
Large Size Snap-in
Large Size Screw
X Metallized Polypropylene Film Capacitors